

## For students who like to learn!

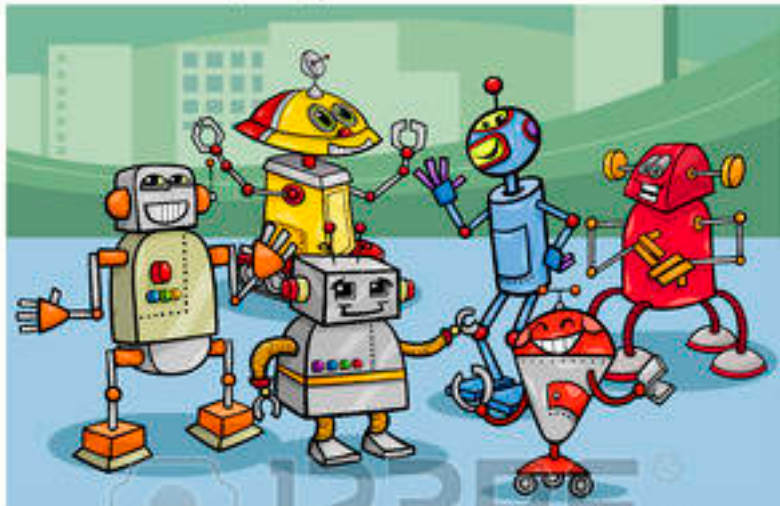
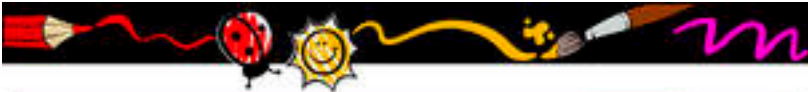
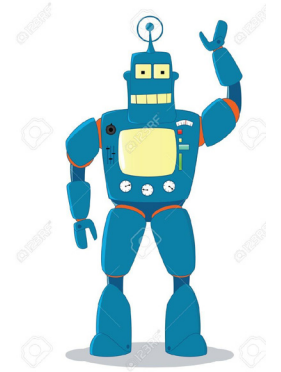
A gizmo is a gadget, especially one whose real name is unknown or forgotten. It can be a mechanical device or control that is very useful for a particular job.

Perhaps it's an appliance, contraption, contrivance, widget or convenience?

Tuesday 3rd July

### Gizmos in science

There are many 'gizmos' in Science. Some even have names! On our Science Day we will be looking at a number of useful gadgets and maybe inventing some of our own.



Wednesday 4th July

### Gizmos in maths

The 'gizmos' in Maths are the conveniences we use to make computations and problem solving possible. In particular we will investigate the ways in which data is represented. There are the graphs and bar charts, the Venn and Gantt diagrams and that most useful of all tools, Place Value.

Thursday 5th July

### Gizmos in language

And what about the 'gizmos' we use in Language?. These are the sneaky contrivances used to develop stories, simplify instructions, aid memory and minimise confusion. WE will be identifying some of these and looking at ways they can be used to make our writing more exciting.

Friday 6th July

### Gizmos in thinking

Design your own Gizmo. if you could pick one job or task that you'd like replaced by a gizmo, what would it be? What kind of machine would you need to build? And how exactly would it work? Also, can strategies be kinds of gizmos that we can use in problem solving?

Wednesday 4th to Friday 6th July

### Scholars' Workshop

This is a 3 day program which runs parallel to our Maths, Language and Thinking Programs. We will be working with all students heading for Scholarship Exams - Years 4 to 8.



# APPLICATION FORM



Parent/s or Guardian Name: \_\_\_\_\_

Address: \_\_\_\_\_  
 \_\_\_\_\_  
 \_\_\_\_\_

Postcode \_\_\_\_\_

Phone: \_\_\_\_\_

Mob: \_\_\_\_\_

Email: \_\_\_\_\_

Fax: \_\_\_\_\_

Date	Program	Student Name (s)	2018 School Year Level

Payment Details:

Cash

Cheque

EFT

Payment by EFT (Reference HP and family name)

CHIP PROGRAMS,

BSB: 083 266

A/C No: 655366441

Cheque Option: I enclose \$ \_\_\_\_\_ (Payable to CHIP Programs)

Please send your completed Application Form with payment to CHIP Programs.

email to [key-strokes@bigpond.com](mailto:key-strokes@bigpond.com) or mail to P.O. Box 2203, Sunbury, 3429

Please use this form to calculate & check your payment for the Holiday Program AND return with application form opposite

No. of students

TOTAL

Tues	3/7	Science		
Wed	4/7	Maths or Scholar Day 1		
Thurs	5/7	Language or Scholar Day 2		
Fri	6/7	Thinking or Scholar Day 3		

1 day	\$50
2 days	\$48 each
3 days	\$46 each
4 or more Family Days	\$44 each

eg 1st child - 1 day, 2nd child - 2 days makes total Family Days 3.

Scholar Program \$160 per child for the 3 day Workshop.

Please note that photographs of your child/ren may be used in CHIP promotional material (including the CHIP website). Their names will not be published.

### NON - SCHOLARS

Number of Family days \_\_\_\_\_ @ \_\_\_\_\_ per child \$ \_\_\_\_\_

### SCHOLARS

Three day Program \$160 .00

TOTAL: \$ \_\_\_\_\_

# INFORMATION FOR PARENTS

## CONTACTS

If you wish to deliver a message to your child or speak to a CHIP Program supervisor during the course of the program, you may use the following number:

WEEKDAYS BETWEEN 9.30AM – 4.30PM                      Mobile: 0448 880 331

If the call is not answered please leave a message and re-call if we don't get back to you.

It is actually easier to respond to emails so please feel free to use this preferred contact method [keystrokes@bigpond.com](mailto:keystrokes@bigpond.com)

## LUNCH

All children are expected to bring a packed lunch and morning tea. We may make additional refreshments available. Please let us know if this is not acceptable. Generally we have two half hour breaks but much depends on the day's activity and the weather. There is a major pigeon problem at Clifton Hill PS so it helps if lunch boxes can be easily and securely fastened.

## ENROLMENT

Please ensure that you enrol your child at the earliest opportunity, as places are often limited. Your enrolment cannot be guaranteed if lodged close to the commencement date. Registrations received without payment will not be guaranteed.

Receipts will be available and can be collected on the last day attended. We are no longer a REGISTERED CHILD CARE provider as this category of care has been discontinued.

## CONFIRMATION

Confirmations will be sent by email only so please make sure that we have a working address for you. If you do not receive an email from us within a week of sending your application, please contact us by phone on 0448 880 331.

## CANCELLATION

If there are insufficient numbers booked to attend a workshop two days before it is due to be run, it will be cancelled. Last minute unavailability of staff may also cause a cancellation. This has never happened. If you pay for a session that is subsequently cancelled, you will be fully refunded for that session. It has been many years since a session was cancelled!

## COSTS

Programs are charged on a 'number of days per program attended per family' basis. There is a basic charge for the 3 day Scholar Program. Some Programs have a surcharge attached - eg Robotics. These are noted on the Application Form.

## HATS

Wearing hats during outside activities is compulsory for children enrolled in Primary Schools at defined times of the year. At other times it is advisable to bring a warm jumper or jacket.

## YEAR LEVEL RANGE

CHIP Holiday Programs are designed to cater for primary level students. Generally all workshops are suitable for students in years Prep to 6, but this may vary depending on the activity.

## WORKSHOPS

Workshops are from 10.00am – 4.00pm each day. Please refer to the program for details. Some workshops recommend that students wear appropriate clothing – please see program descriptions. Weather can vary - very hot to very cold. Hats are mandatory during the Summer and Autumn programs and sunscreen is advised. Warm jackets are advisable in Winter and Spring.

## VENUE

We use the Library at Clifton Hill PS. It is in the new building behind the old school. It is upstairs. There is a lift which is to the left, beside the stairs. Parking is available in Page Street.

## WITHDRAWAL

A withdrawal fee of \$20 per child is applicable if a booking is withdrawn within a week of the program start.

Please notify us as soon as possible by emailing your withdrawal notice to [office@chip.edu.au](mailto:office@chip.edu.au)

## RECEIPTS

Receipts will be available, on request, at the conclusion of the last day on which a member of each particular family attends. Please ask in the morning of your child's last day if you require one of these. It will then be ready for your collection at 4pm. It is quite time-consuming to search through our records at the end of the tax year, so please try to collect these after each program. Receipts cannot be issued ahead of attendance.

PLEASE USE THE GENERAL CHIP HOLIDAY PROGRAM APPLICATION FORM TO ENROL IN SCHOLAR WORKSHOPS

W  
O  
N  
N  
E  
R  
H  
O  
L  
I  
D  
A  
Y  
P  
R  
O  
G  
R  
A  
M

CHIP's Scholar Workshops prepare students for examinations or accelerated program entry.

This Workshop is suitable for all students who are contemplating taking a scholarship in 2019/20.

Although many students have the skills required for successful completion of these tests, they often lack the techniques necessary to apply these successfully. We will focus on time management and multiple-choice strategy as well as increasing current skill levels:

**Mathematics** - including a variety of questions similar to the ones most likely to appear on exams. Both basic skills and advanced problem solving will be tested.

**English** - covering such areas as spelling, grammar, comprehension, improving sentences and planning written pieces within various genres.

**General Ability** - testing students' aptitude in a variety of areas such as vocabulary, logic & spatial reasoning and general knowledge.



Three day Workshop  
July 4th to 6th -10am to 4pm

Students will experience exam style questions and look at some of the techniques and skills required for success.

THERE WILL ALSO BE A SESSION DEVOTED TO WRITING STYLES.

A time to hone skills skills!

\*\*\*NOTE THE VENUE\*\*\*

Library @ CLIFTON HILL P S  
Park in Page Street, Wellington Street or Gold Street.  
The gates on Wellington Street and Gold Street are closer BUT they are sometimes locked

**Alby, our cartoon character, is ©S.T.A.R.**